



LOVETT
Sales & Lettings

Asking Price Of
£255,000



134 Duck Lane, St. Neots, PE19 2EQ

- Mid terrace
- Three bedrooms
- Walking distance to town/station
- Gas central heating
- No forward chain
- Off road parking

Full Description

ENTRANCE HALL

UPVC double glazed door to front. Doors leading to WC, Lounge and Kitchen. Stairs to first floor, Radiator

WC

Two piece suite comprising low level WC and wash hand basin with tiled splash backs. UPVC double glazed window to front.

KITCHEN

13' 06" x 11' 07" (4.11m x 3.53m)

Fitted kitchen comprising work surfaces with drawers and cupboards under. Wall mounted cupboards. Stainless steel sink/drainer with mixer tap and tiled splash backs. Electric oven, Electric hob with extractor fan over, Plumbing for washing machine, Two UPVC double glazed windows to front, Tiled floor, Radiator

LOUNGE

18' 01" x 10' 08" (5.51m x 3.25m)

UPVC sliding patio door to rear, UPVC window to rear, Carpeted floor, Radiator

LANDING

Airing cupboard combi gas boiler, Storage cupboard, Access to loft space. Doors to bedrooms and bathroom.

BEDROOM ONE

10' 09" x 10' 11" (3.28m x 3.33m)

UPVC Window to rear, Build in wardrobe, Radiator

BEDROOM TWO

11' x 10' 02" (3.35m x 3.1m)

UPVC Window to front, Radiator

BEDROOM THREE

9' 09" x 7' 03" (2.97m x 2.21m)

UPVC window to rear, Radiator

BATHROOM

Three piece white suite comprising low level WC, pedestal wash hand basin and panelled corner bath with electric shower over and mixer taps with hand shower. Tiled walls. UPVC window to front



FRONT GARDEN

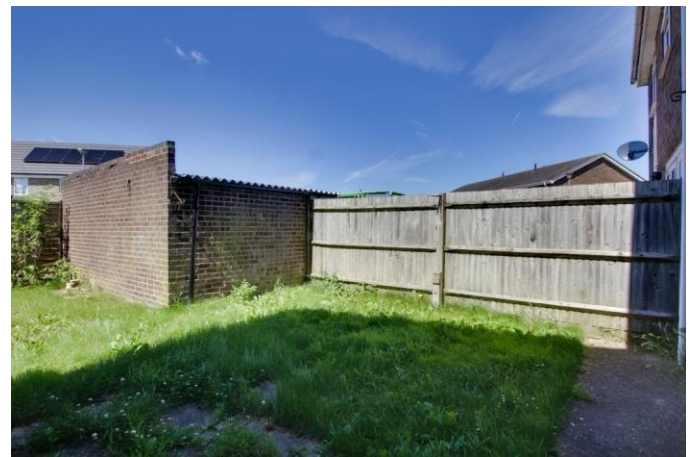
Laid to lawn, Foot bath leading to front door

REAR GARDEN

Enclosed garden, Laid to lawn, Gate leading to parking space

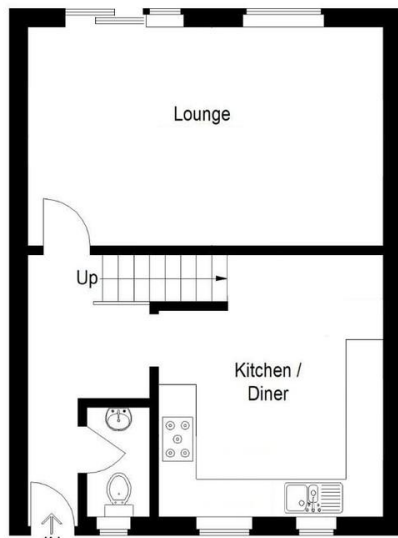
GARAGE/PARKING

Single garage, Up and over door, off road parking space in front of garage

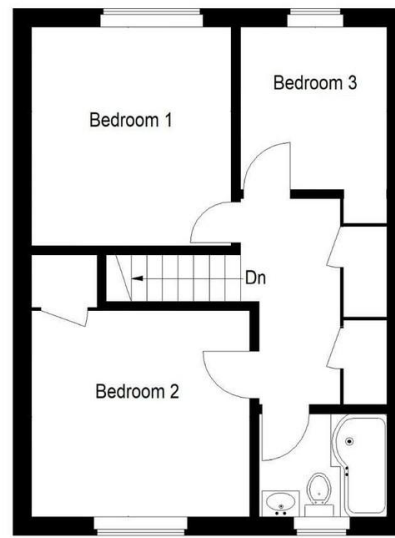


Duck Lane, St. Neots

Approximate Gross Internal Area = 89.9 sq m / 968 sq ft



Ground Floor



First Floor

EPC GRAPH

%epcGraph_c_1_150%

www.lovettssalesandlettings.co.uk Tel: 01480 218200

24 Market Square, St Neots, Cambs, PE19 2AF

Agents Note: Whilst every care has been taken to prepare these sales particulars, they are for guidance purposes only. All measurements are approximate and for general guidance purposes only and whilst every care has been taken to ensure their accuracy, they should not be relied upon and potential buyers are advised to recheck the measurements.