



LOVETT
Sales & Lettings

£240,000



3 Fox Close, St. Neots, PE19 1SP

- Mid terrace home
- Three bedrooms
- Close to Train Station
- Walking distance to town centre
- Shops and Schools nearby
- Gas radiator heating

Full Description

ENTRANCE HALL

UPVC entrance door leading to entrance hall. Stairs to first floor. Door to living room.

LIVING ROOM

14' 4" x 10' 8" (4.37m x 3.25m)

UPVC window to front. Radiator. TV and telephone points. Door to kitchen.



KITCHEN/DINER

14' 4" x 9' 7" (4.37m x 2.92m)

Fitted kitchen comprising work surfaces with complementary drawers and cupboards under. Wall mounted cupboards. Single bowl sink with mixer tap and tiled splash backs. Built in electric oven and four ring hob with extractor over. Utility cupboard with plumbing for washing machine and wall mounted boiler. Radiator. UPVC window to rear. UPVC French doors to side.

LANDING

Airing cupboard. Doors to bedrooms and bathroom.



BEDROOM ONE

10' 9" x 9' 9" (3.28m x 2.97m)

UPVC window to front. Radiator.

BEDROOM TWO

10' 6" x 9' 7" (3.2m x 2.92m)

UPVC window to rear. Radiator.



BEDROOM THREE

8' 7" x 7' 9" (2.62m x 2.36m)

UPVC window to front. Radiator.

BATHROOM

Three piece suite comprising low level WC, pedestal wash hand basin and panelled bath with shower over. Tiled splash backs. Radiator. UPVC window to rear.

REAR GARDEN

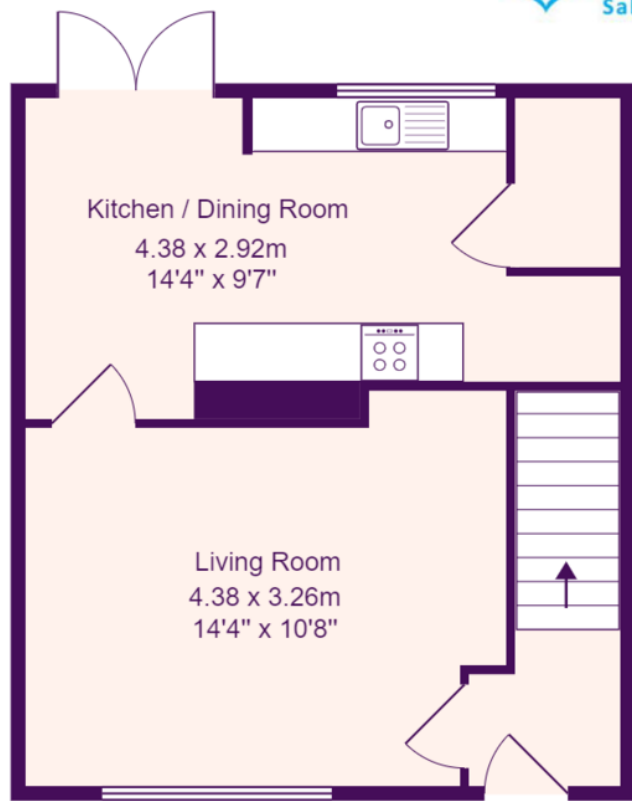
Mainly laid to lawn. Gated access to rear. Two brick built storage sheds.

FRONT GARDEN

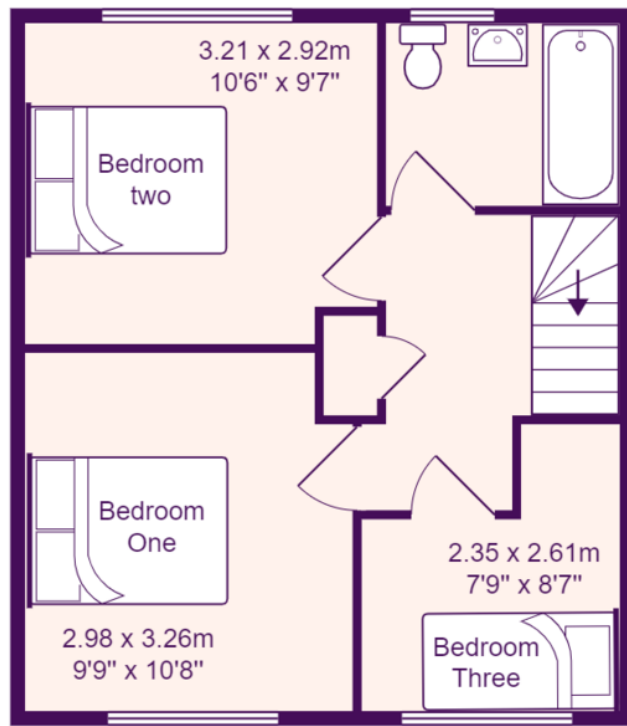
Mainly laid to lawn. Potential for off road parking subject to relevant permission for a drop kerb from Highways.







Ground Floor



First Floor

Total Area: 67.8 m² ... 730 ft²

All measurements are approximate and for display purposes only