



24b The Crescent, St. Neots, PE19 1EQ

- End of terrace home
- Three bedrooms
- 0.11 Acre corner plot
- In need of cosmetic refurbishment
- Close to town and schools
- Garage and driveway

Full Description

A spacious three bedroom end of terrace home in need of cosmetic refurbishment situated on a 0.11 acre corner plot. The property is located within easy walking distance of St Neots Town Centre as well as local primary and secondary schools. The accommodation comprises entrance hall, living room, dining room, kitchen, WC and utility room on the ground floor. The first floor has three good sized bedrooms and a refitted shower room. Externally there is a mature front and rear garden with storage sheds plus a garage and off road parking. The property benefits from gas radiator heating. No forward chain.

LIVING ROOM

14' 0" x 10' 9" (4.27m x 3.28m)

DINING ROOM

12' 6" x 10' 5" (3.81m x 3.18m)

KITCHEN

12' 6" x 10' 5" (3.81m x 3.18m)

BEDROOM ONE

12' 6" x 10' 7" (3.81m x 3.23m)

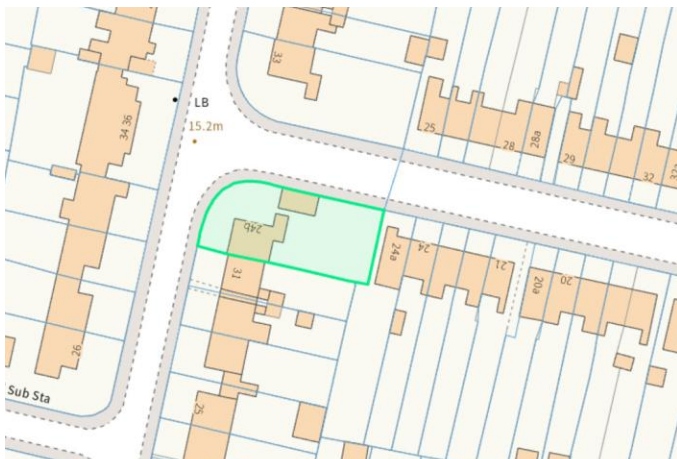
BEDROOM TWO

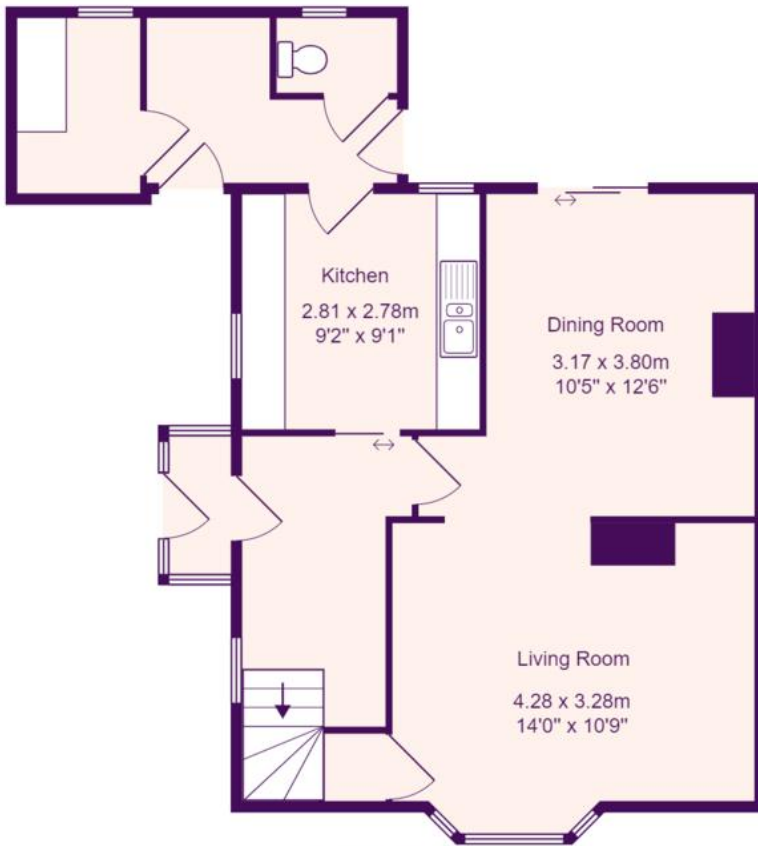
10' 7" x 9' 4" (3.23m x 2.84m)

BEDROOM THREE

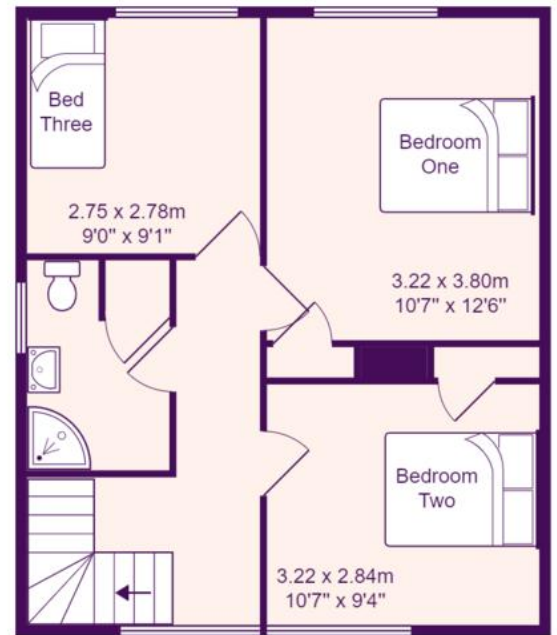
9' 1" x 9' 0" (2.77m x 2.74m)







Ground Floor



First Floor

Total Area: 97.8 m² ... 1053 ft²

All measurements are approximate and for display purposes only