



4 Lee Court St. Marys Street, Eynesbury

St. Neots

£140,000



Entrance Hall

Wooden glazed entrance door leading to entrance hall. Stairs to first floor. Fitted mat.

First Floor Landing

Window to front. Airing cupboard housing hot water cylinder plus storage cupboard. Stairs to second floor. Doors to living room and bathroom.

Living Room

14' 9" x 8' 7" (4.50m x 2.62m)

Windows to front. Electric heaters. TV and telephone points. Open plan through to kitchen.

Kitchen

6' 8" x 6' 3" (2.03m x 1.91m)

Refitted kitchen comprising work surfaces with complementary drawers and cupboards under. Wall mounted cupboards. Single bowl sink with mixer tap and tiled splash backs. Space for electric cooker with extractor over. Space for fridge / freezer. Plumbing for washing machine. Tiled floor. Window to rear.

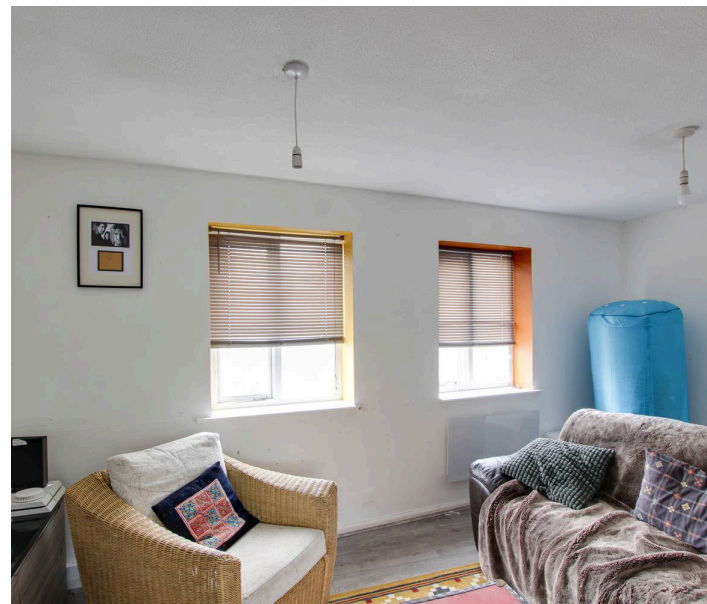
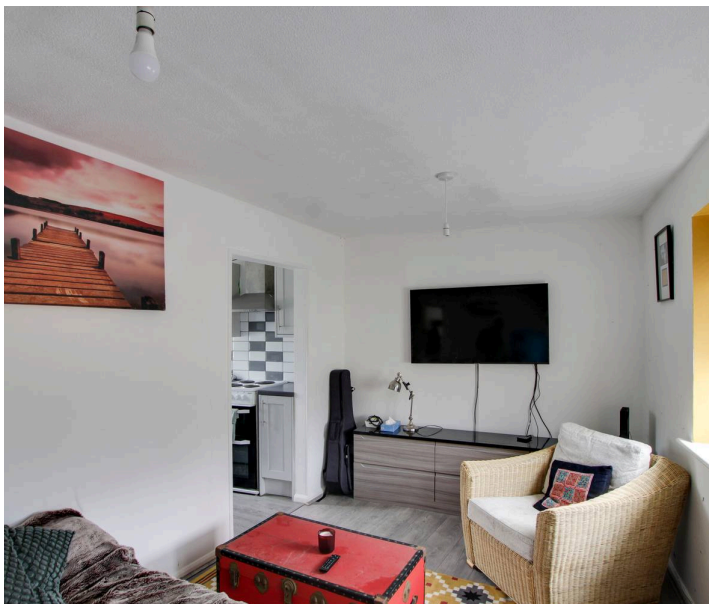
Bathroom

Three piece suite comprising low level WC, pedestal wash hand basin and panelled bath with electric shower over. Tiled splash backs. Window to rear.

Second Floor Bedroom

21' 6" x 9' 7" (6.55m x 2.92m)

Window to side. Fitted eaves storage cupboards.





Entrance Hall

Wooden glazed entrance door leading to entrance hall. Stairs to first floor. Fitted mat.

First Floor Landing

Window to front. Airing cupboard housing hot water cylinder plus storage cupboard. Stairs to second floor. Doors to living room and bathroom.

Living Room

14' 9" x 8' 7" (4.50m x 2.62m)

Windows to front. Electric heaters. TV and telephone points. Open plan through to kitchen.

Kitchen

6' 8" x 6' 3" (2.03m x 1.91m)

Refitted kitchen comprising work surfaces with complementary drawers and cupboards under. Wall mounted cupboards. Single bowl sink with mixer tap and tiled splash backs. Space for electric cooker with extractor over. Space for fridge / freezer. Plumbing for washing machine. Tiled floor. Window to rear.

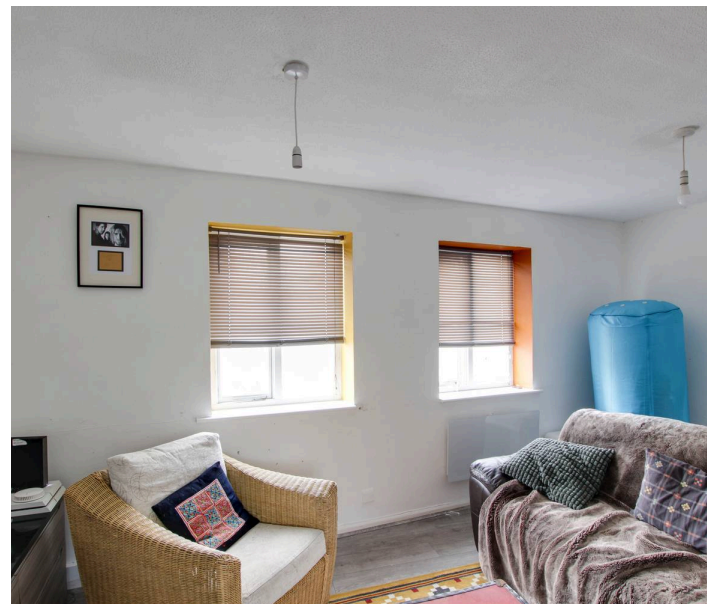
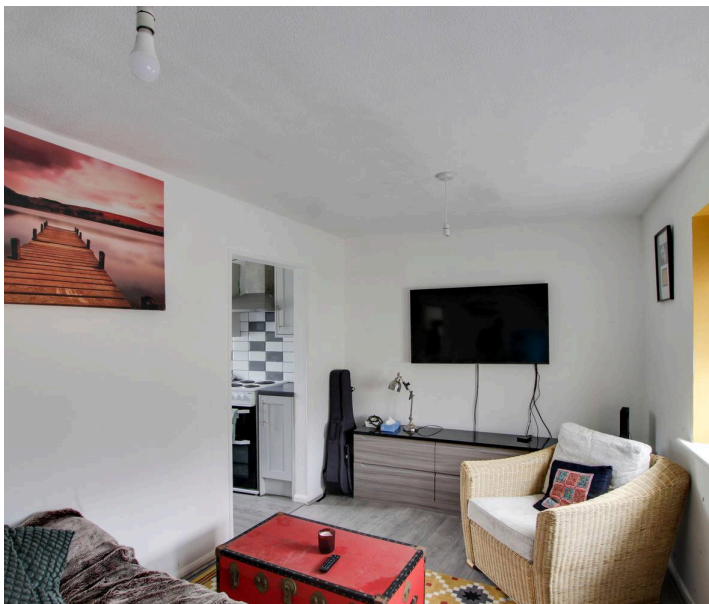
Bathroom

Three piece suite comprising low level WC, pedestal wash hand basin and panelled bath with electric shower over. Tiled splash backs. Window to rear.

Second Floor Bedroom

21' 6" x 9' 7" (6.55m x 2.92m)

Window to side. Fitted eaves storage cupboards.





Lovett Sales & Lettings

Lovett Residential, 24 Market Square – PE19 2AF

01480 218200 • info@lovettsalesandlettings.co.uk • www.lovettsalesandlettings.co.uk

