



51 Gordon Close, Little Paxton, St. Neots, PE19 6PF

- Extended semi-detached home
- Three bedrooms
- South facing rear garden
- Garage and parking to rear
- Gas radiator heating
- Close to village amenities

Full Description

An EXTENDED three bedroom semi detached family home in the heart of the sought after village of Little Paxton. The property is within short walking distance village amenities including PAXTON PITS NATURE RESERVE, doctors surgery, pharmacy, convenience stores, pub/restaurant, community hub, village hall, large play parks and primary school. The accommodation comprises entrance hall, living room, dining room, kitchen and bathroom on the ground floor. The first floor has three spacious bedrooms. The property benefits from gas radiator heating (new boiler in 2020). Externally there is a South facing rear garden and a garage and parking space in a block to the rear.

ENTRANCE HALL

Glazed entrance door leading to entrance hall. Stairs to first floor. Doorway to dining area. Door to kitchen and bathroom. Radiator. Tiled floor.

DINING AREA

9' 7" x 6' 7" (2.92m x 2.01m)

Sliding door to rear garden. Radiator. Open plan through to living room. Tiled floor.

LIVING ROOM

14' 7" x 12' 1" (4.44m x 3.68m)

UPVC French doors and window to garden. Tiled floor. TV and telephone points. Radiator.

KITCHEN

16' 1" x 8' 7" (4.9m x 2.62m)

Fitted kitchen comprising work surfaces with complementary drawers and cupboards under. Wall mounted cupboards. One and a half bowl sink with mixer tap and tiled splash backs. Space for range style cooker with extractor fan over. Plumbing for washing machine and dishwasher. Cupboard housing gas boiler. Radiator. Tiled floor. Pantry cupboard under stairs. UPVC window to front.

BATHROOM

Three piece suite comprising low level WC, pedestal wash hand basin and panelled bath with shower over. Tiled splash backs. Radiator and heated towel rail. Tiled floor. UPVC window to front.

LANDING

Two storage cupboards and loft access. Doors to bedrooms.



BEDROOM ONE

14' 7" x 9' 1" (4.44m x 2.77m)

UPVC window to front. Radiator. Fitted shower unit with glass door and tiled splash backs.

BEDROOM TWO

14' 7" x 9' 7" (4.44m x 2.92m)

Two UPVC windows to rear. Radiator.

BEDROOM THREE

17' 10" x 5' 11" (5.44m x 1.8m)

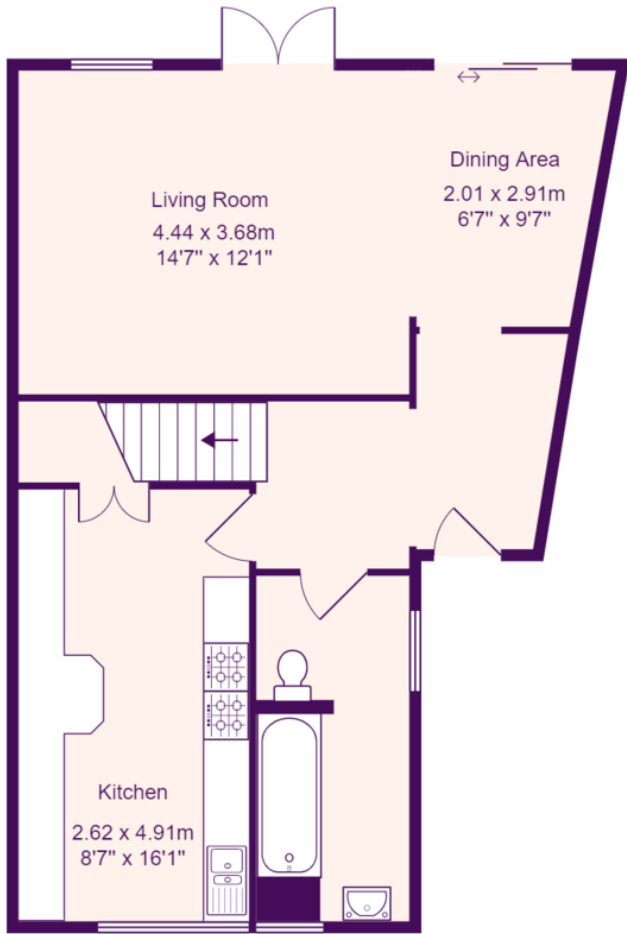
UPVC windows to front and rear. Radiator.

REAR GARDEN

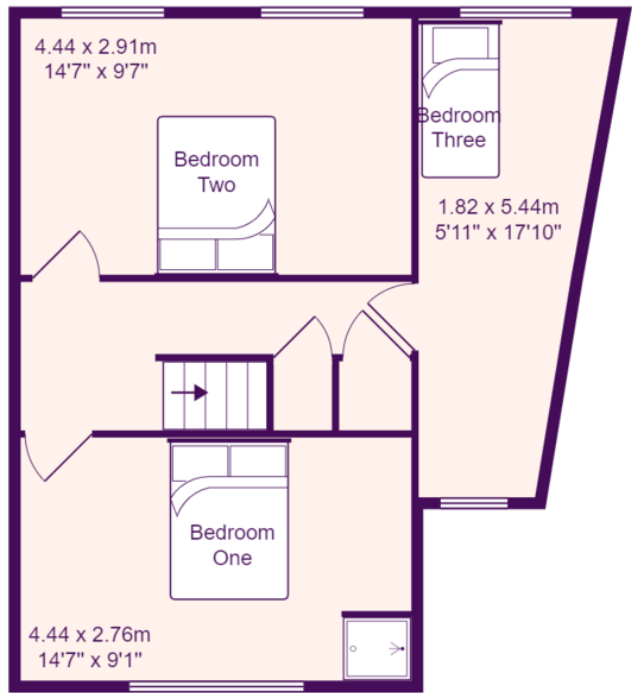
South facing rear garden. Gated access to rear leading to garage.

GARAGE

Single garage with up and over door. Parking space in front.



Ground Floor



First Floor

Total Area: 96.6 m² ... 1039 ft²

All measurements are approximate and for display purposes only