



6 Hare Meadow, Great Barford

Bedford



£360,000



Entrance Hall

Composite entrance door leading to entrance hall. Radiator. Stairs to first floor. Doors to kitchen and WC.

WC

Two piece white suite comprising low level WC and wash hand basin. UPVC window to front.

Kitchen / Dining / Family Room

27' 7" x 12' 4" (8.41m x 3.76m)

Open plan kitchen / dining / family room. Kitchen comprises quartz work surfaces with complementary drawers and cupboards under. Wall mounted cupboards. Single inset sink with drainer grooves and tiled splash backs. Built in electric oven and four ring hob with extractor fan over. Built in fridge/freezer, dishwasher and washing machine. Cupboard housing gas boiler. Inset ceiling lights. UPVC windows to front and side. UPVC French doors to rear garden. Radiators. TV and telephone points. Storage cupboard under stairs.

Landing

Stairs to second floor. Radiator. Doors to living room and bedroom one.

Living Room

12' 4" x 10' 7" (3.76m x 3.23m)

Currently being used as an additional bedroom. Tow UPVC windows to front. Radiator. TV Point.

Bedroom One

12' 4" x 8' 9" (3.76m x 2.67m)

UPVC window to rear. Radiator. Door to en-suite.

Ensuite

Three piece white suite comprising low level WC, pedestal wash hand basin and a fitted shower unit with tiled splash back and glass screen. Radiator. Extractor fan.

Second floor landing

Doors to bedrooms two, three and bathroom.

Bedroom Two





Entrance Hall

Composite entrance door leading to entrance hall. Radiator. Stairs to first floor. Doors to kitchen and WC.

WC

Two piece white suite comprising low level WC and wash hand basin. UPVC window to front.

Kitchen / Dining / Family Room

27' 7" x 12' 4" (8.41m x 3.76m)

Open plan kitchen / dining / family room. Kitchen comprises quartz work surfaces with complementary drawers and cupboards under. Wall mounted cupboards. Single inset sink with drainer grooves and tiled splash backs. Built in electric oven and four ring hob with extractor fan over. Built in fridge/freezer, dishwasher and washing machine. Cupboard housing gas boiler. Inset ceiling lights. UPVC windows to front and side. UPVC French doors to rear garden. Radiators. TV and telephone points. Storage cupboard under stairs.

Landing

Stairs to second floor. Radiator. Doors to living room and bedroom one.

Living Room

12' 4" x 10' 7" (3.76m x 3.23m)

Currently being used as an additional bedroom. Tow UPVC windows to front. Radiator. TV Point.

Bedroom One

12' 4" x 8' 9" (3.76m x 2.67m)

UPVC window to rear. Radiator. Door to en-suite.

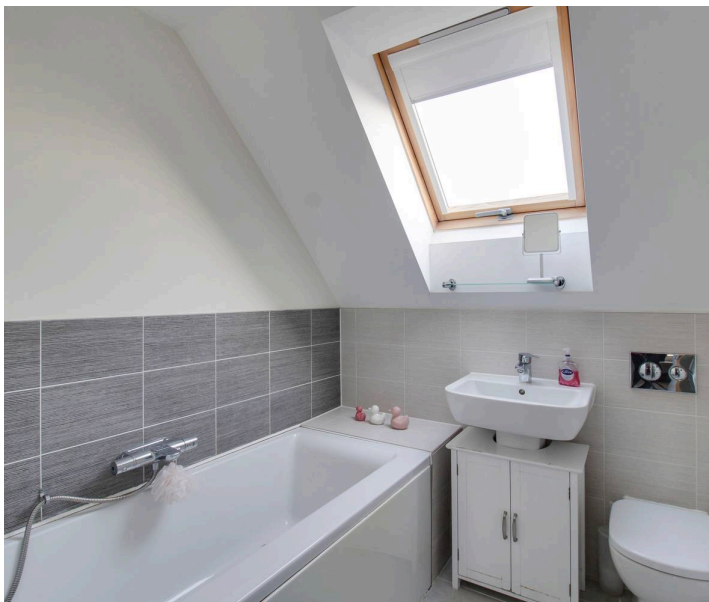
Ensuite

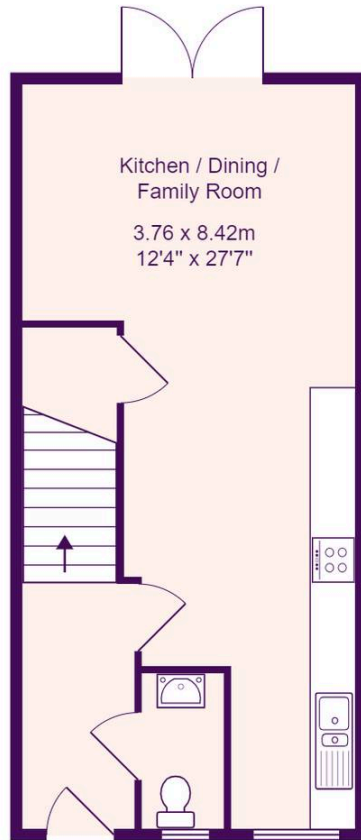
Three piece white suite comprising low level WC, pedestal wash hand basin and a fitted shower unit with tiled splash back and glass screen. Radiator. Extractor fan.

Second floor landing

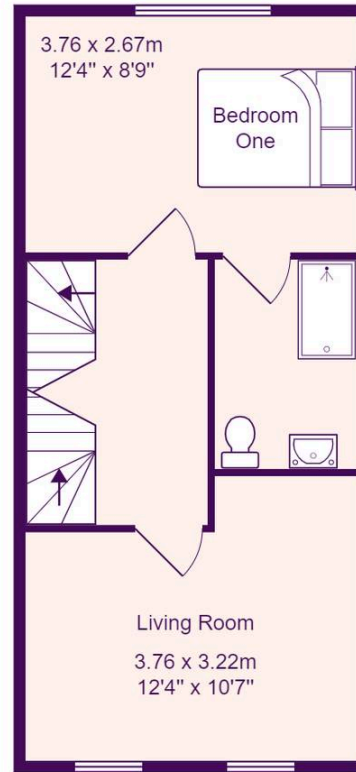
Doors to bedrooms two, three and bathroom.

Bedroom Two

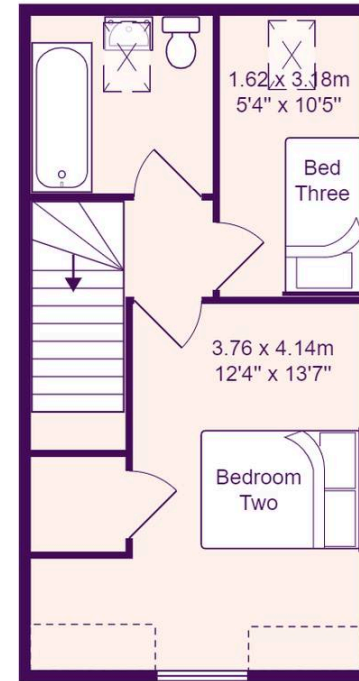




Ground Floor



First Floor



Second Floor

Total Area: 91.2 m² ... 981 ft²

All measurements are approximate and for display purposes only

Lovett Sales & Lettings

Lovett Residential, 24 Market Square - PE19 2AF

01480 218200 • info@lovettsalesandlettings.co.uk • www.lovettsalesandlettings.co.uk

