

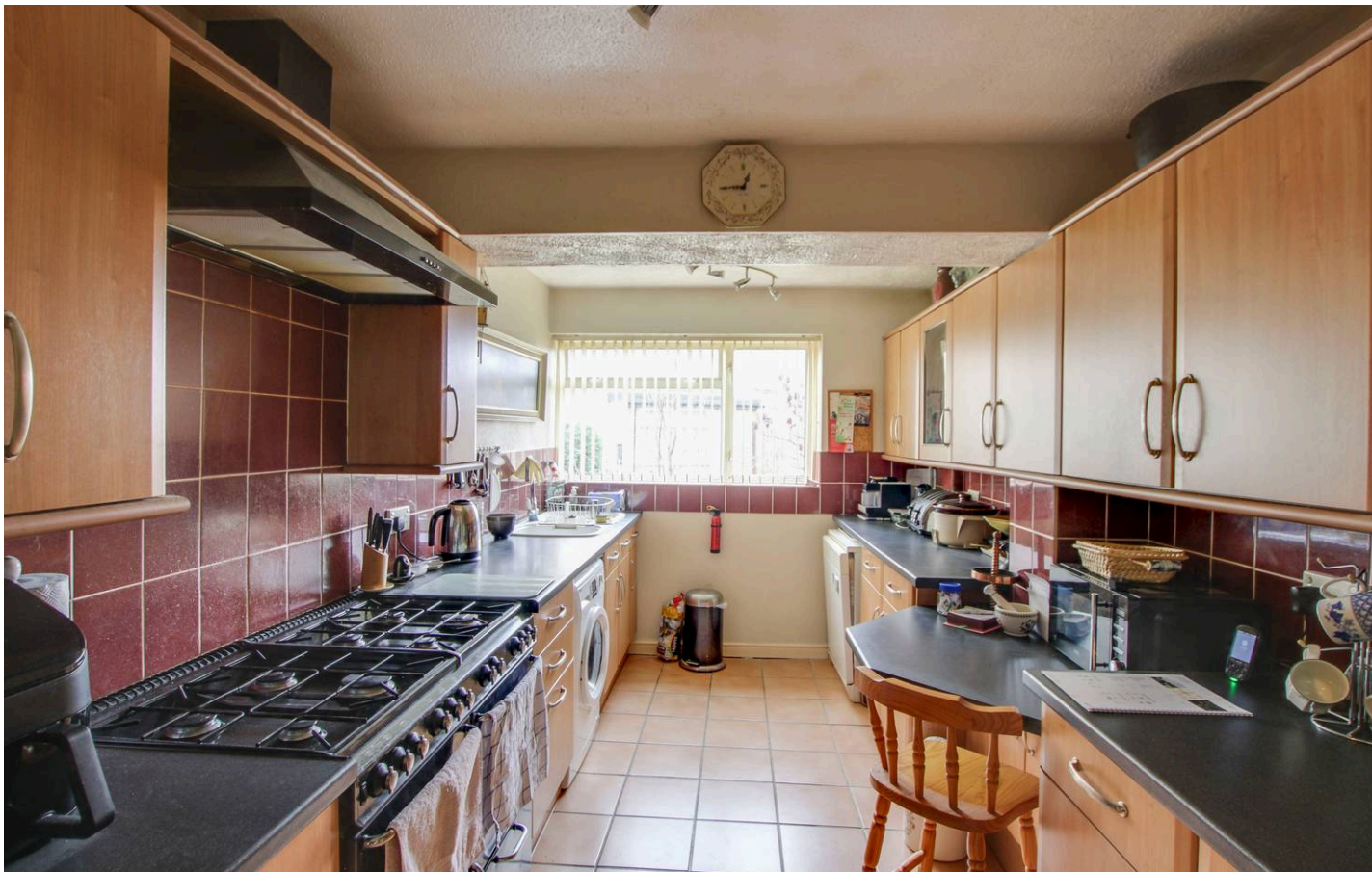


51 Gordon Close, Little Paxton

St. Neots

£275,000





### Entrance Hall

Glazed entrance door leading to entrance hall. Stairs to first floor. Doorway to dining area. Door to kitchen and bathroom. Radiator. Tiled floor.

### Dining Area

6' 7" x 6' 7" (2.01m x 2.01m)

Sliding door to rear garden. Radiator. Open plan through to living room. Tiled floor. Telephone point.

### Living Room

14' 7" x 12' 1" (4.45m x 3.68m)

UPVC French doors and window to garden. Tiled floor. TV point. Radiator.

### Kitchen

16' 1" x 8' 7" (4.90m x 2.62m)

Fitted kitchen comprising work surfaces with complementary drawers and cupboards under. Wall mounted cupboards. One and a half bowl sink with mixer tap and tiled splash backs. Space for range style cooker with extractor fan over. Plumbing for washing machine and dishwasher. Cupboard housing gas boiler. Radiator. Tiled floor. Pantry cupboard under stairs. UPVC window to front.

### Bathroom

Three piece suite comprising low level WC, pedestal wash hand basin and panelled bath with shower over. Tiled splash backs. Radiator and heated towel rail. Tiled floor. UPVC window to front.

### Landing

Two storage cupboards and loft access. Doors to bedrooms.

### Bedroom One

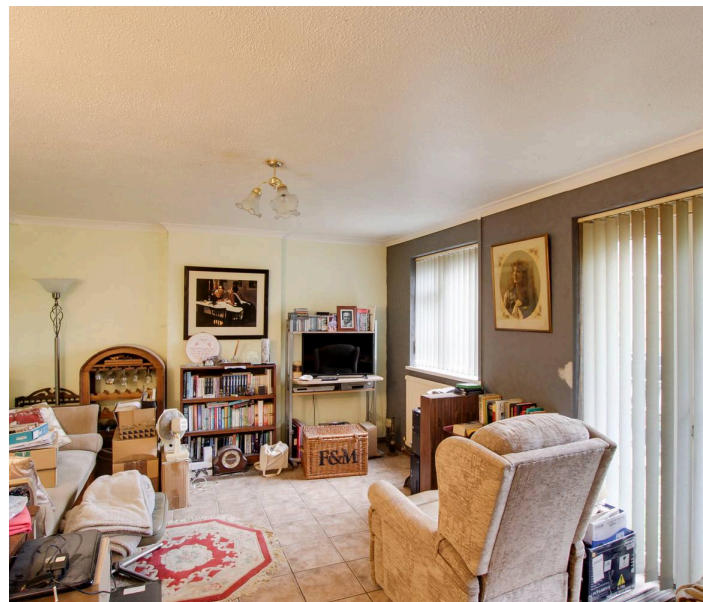
14' 7" x 9' 1" (4.45m x 2.77m)

UPVC window to front. Radiator. Fitted shower unit with glass door and tiled splash backs.

### Bedroom Two

14' 7" x 9' 7" (4.45m x 2.92m)

Two UPVC windows to rear. Radiator.







### Entrance Hall

Glazed entrance door leading to entrance hall. Stairs to first floor. Doorway to dining area. Door to kitchen and bathroom. Radiator. Tiled floor.

### Dining Area

6' 7" x 6' 7" (2.01m x 2.01m)

Sliding door to rear garden. Radiator. Open plan through to living room. Tiled floor. Telephone point.

### Living Room

14' 7" x 12' 1" (4.45m x 3.68m)

UPVC French doors and window to garden. Tiled floor. TV point. Radiator.

### Kitchen

16' 1" x 8' 7" (4.90m x 2.62m)

Fitted kitchen comprising work surfaces with complementary drawers and cupboards under. Wall mounted cupboards. One and a half bowl sink with mixer tap and tiled splash backs. Space for range style cooker with extractor fan over. Plumbing for washing machine and dishwasher. Cupboard housing gas boiler. Radiator. Tiled floor. Pantry cupboard under stairs. UPVC window to front.

### Bathroom

Three piece suite comprising low level WC, pedestal wash hand basin and panelled bath with shower over. Tiled splash backs. Radiator and heated towel rail. Tiled floor. UPVC window to front.

### Landing

Two storage cupboards and loft access. Doors to bedrooms.

### Bedroom One

14' 7" x 9' 1" (4.45m x 2.77m)

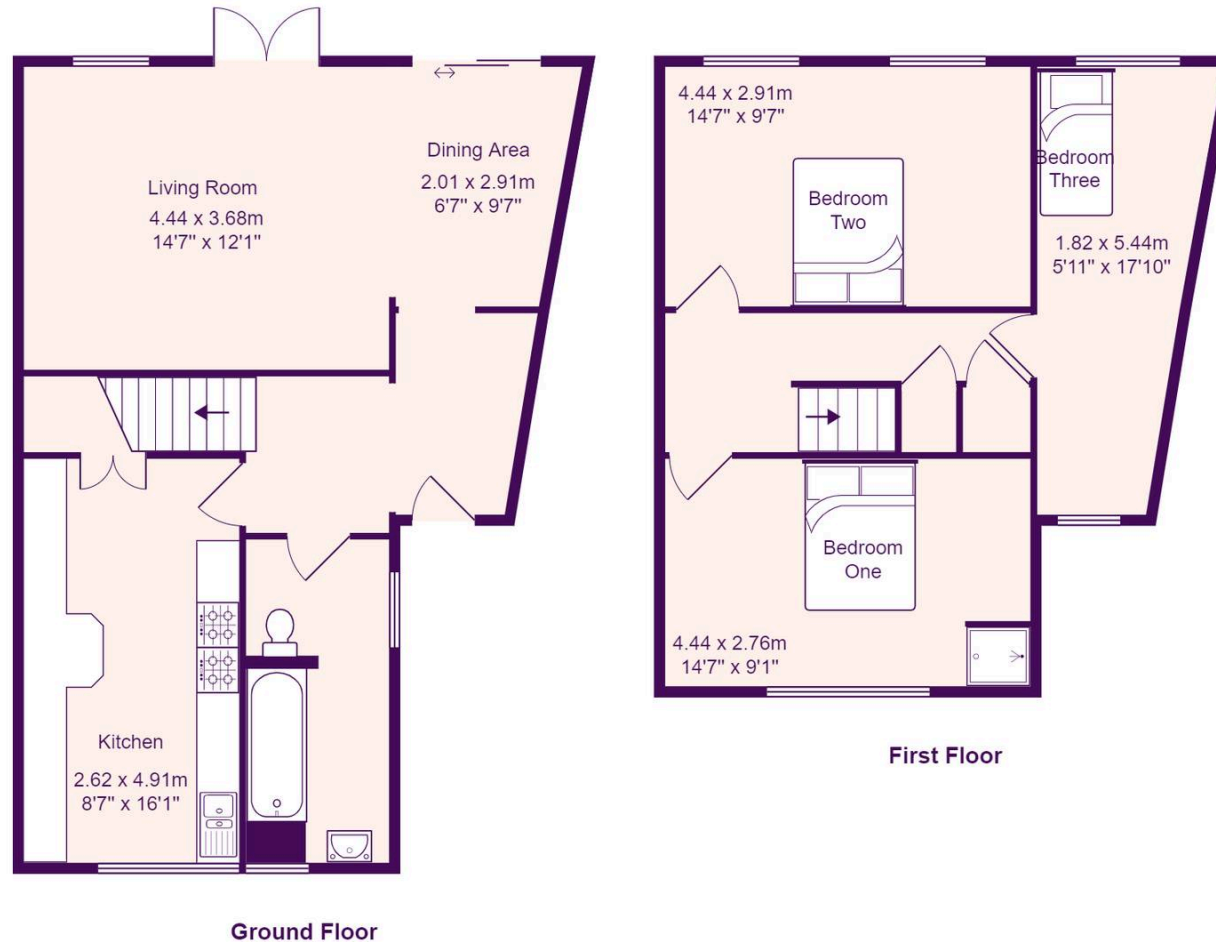
UPVC window to front. Radiator. Fitted shower unit with glass door and tiled splash backs.

### Bedroom Two

14' 7" x 9' 7" (4.45m x 2.92m)

Two UPVC windows to rear. Radiator.





Total Area: 96.6 m<sup>2</sup> ... 1039 ft<sup>2</sup>

All measurements are approximate and for display purposes only

# Lovett Sales & Lettings

Lovett Residential, 24 Market Square – PE19 2AF

01480 218200 • [info@lovettsalesandlettings.co.uk](mailto:info@lovettsalesandlettings.co.uk) • [www.lovettsalesandlettings.co.uk](http://www.lovettsalesandlettings.co.uk)

