



16 St. Hughs Road, Buckden

St. Neots

£500,000





This detached family home, nestled in a sought-after village location, offers comfortable living with four good-sized bedrooms. Perfectly situated within walking distance to village shops and amenities, it also provides easy access to the A1 for convenient commuting. Although some cosmetic refurbishment is required, the property boasts a double garage and driveway, as well as the added benefit of solar panels. Offering a hassle-free purchase, this home is available with no forward chain.

#### **Entrance Hall**

UPVC entrance door leading to entrance hall. UPVC full height windows to front. Stairs to first floor. Large storage cupboards. Radiator. Doors to Living room, Kitchen and WC.

#### **WC**

Two piece suite comprising low level WC and pedestal wash hand basin. Radiator.

#### **Living Room**

20' 7" x 12' 5" (6.27m x 3.78m)

UPVC windows to front and rear. UPVC sliding door to garden. Radiator. French doors to dining room. Feature fireplace surround.

#### **Dining Room**

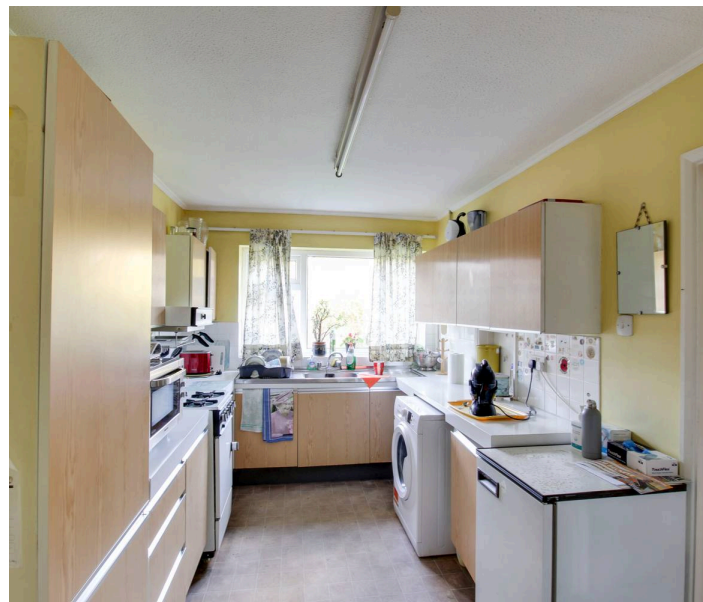
12' 0" x 9' 7" (3.66m x 2.92m)

UPVC window to rear. Radiator. French doors through to living room.

#### **Kitchen**

16' 6" x 7' 8" (5.03m x 2.34m)

Fitted kitchen comprising work surfaces with drawers and cupboards under. Wall mounted cupboards. Double drainer sink with mixer tap. Tiled splash backs. Gas cooker point. Plumbing for washing machine. Door to dining room. Door to side lobby.







#### **Side lobby**

12' 0" x 8' 1" (3.66m x 2.46m)

Glazed door and window to rear. Door to front garden and personal door to double garage.

#### **Landing**

Two UPVC windows to front. Airing cupboard housing gas boiler. Doors to bedrooms and bathroom.

#### **Bedroom One**

12' 6" x 10' 1" (3.81m x 3.07m)

UPVC window to rear. Radiator. Built in wardrobes.

#### **Bedroom Two**

11' 10" x 10' 3" (3.61m x 3.12m)

UPVC window to rear. Radiator. Built in wardrobe.

#### **Bedroom Three**

12' 6" x 7' 8" (3.81m x 2.34m)

UPVC window to rear. Radiator. Built in wardrobe.

#### **Bedroom Four**

9' 0" x 8' 3" (2.74m x 2.51m)

UPVC window to front. Radiator. Built in wardrobe.

#### **Bathroom**

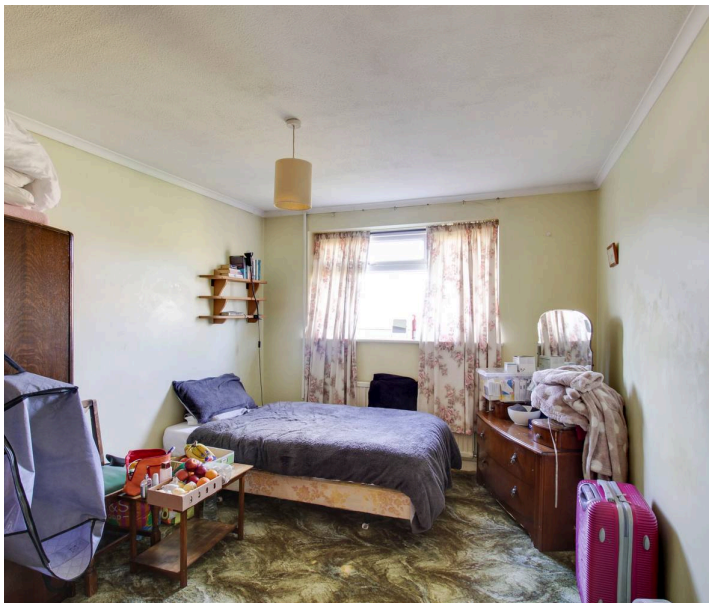
Three piece suite comprising low level WC, pedestal wash hand basin and panelled bath with shower attachment over. Tiled splash backs. UPVC window to front.

#### **Rear Garden**

Enclosed rear garden mainly laid to lawn with flower and shrub borders. Gated access to side. Door to side lobby. Greenhouse.

#### **Double Garage**

19ft wide double garage with up and over door. Power and light. Personal door to rear.







# Lovett Sales & Lettings

Lovett Residential, 24 Market Square – PE19 2AF

01480 218200 • [info@lovettsalesandlettings.co.uk](mailto:info@lovettsalesandlettings.co.uk) • [www.lovettsalesandlettings.co.uk](http://www.lovettsalesandlettings.co.uk)

