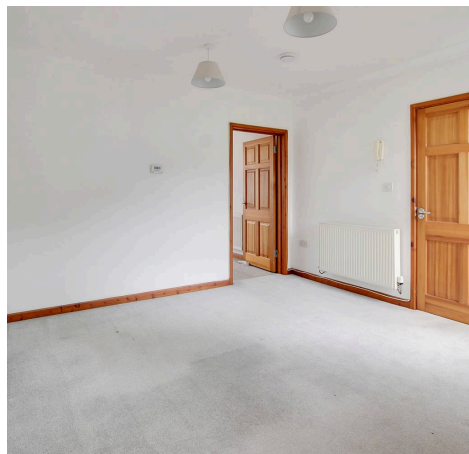
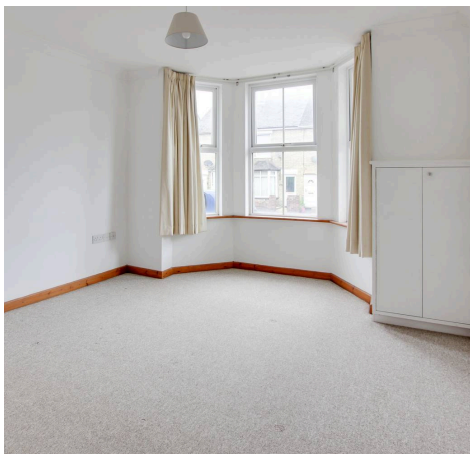




Flat 2

Northview, St. Neots

- GROUND FLOOR FLAT
- TWO BEDROOMS
- ALLOCATED PARKING
- CLOSE TO TOWN CENTRE
- GAS CENTRAL HEATING
- COUNCIL TAX BAND A







Lovett Residential Sales & Lettings

24, Market Square, St Neots - PE19 2AF

01480 218200 • info@lovettsalesandlettings.co.uk • www.lovettsalesandlettings.co.uk

