



27 Cumberland Way, Eynesbury

St. Neots

£180,000



Hallway

UPVC entrance door leading to entrance hall. Cupboard housing gas Ideal combi boiler. Cupboard under the stairs. Electrical consumer unit. Doors to kitchen and living room.

Kitchen

11' 2" x 6' 2" (3.40m x 1.88m)

Fitted kitchen comprising work surfaces with drawers and cupboards under. Wall mounted cupboards. Built in electric oven and four ring hob with extractor fan over. Plumbing for washing machine. Space for fridge/freezer. UPVC window to front. Radiator.

Living Room

13' 6" x 12' 9" (4.11m x 3.89m)

UPVC Bay window to front. Radiator. TV & telephone points. Stairs to first floor.

Landing

Doors to bedrooms and bathroom.

Bedroom One

11' 2" x 10' 10" (3.40m x 3.30m)

UPVC window to front. Radiator.

Bedroom Two

11' 2" x 6' 6" (3.40m x 1.98m)

UPVC window to front.

Bathroom

Three piece suite comprising low level WC, pedestal wash hand basin and panelled bath with shower attachment over. Tiled splash backs. Radiator. UPVC window to front.



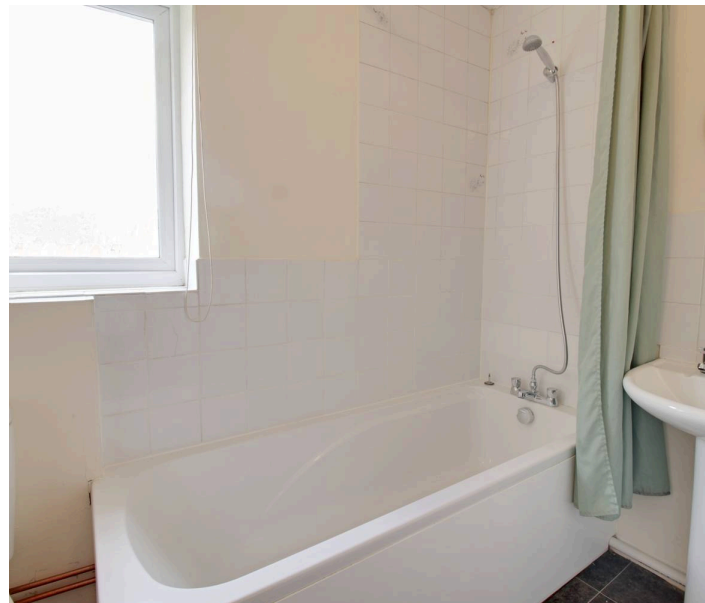


Garden

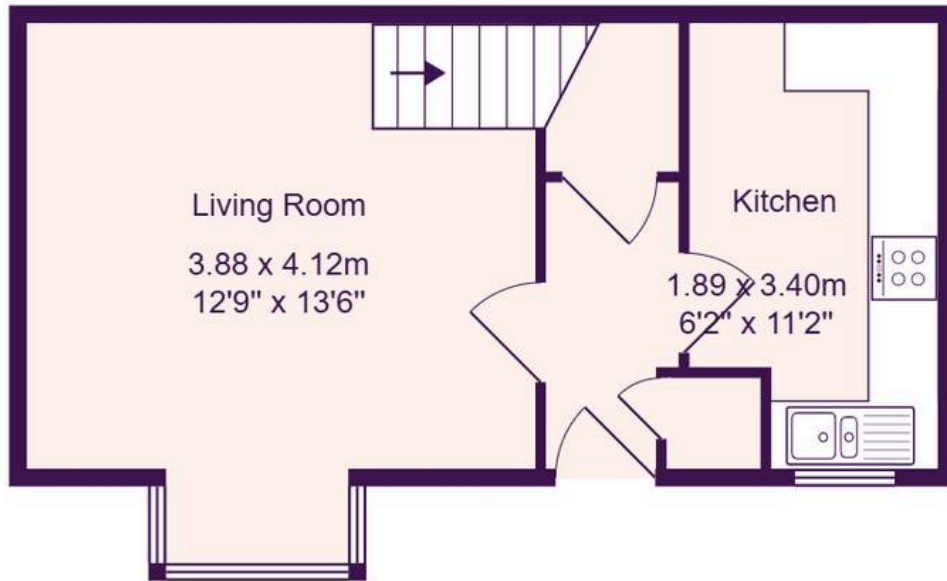
Open plan garden to front and side enclosed with mature hedges and gated access. Mainly laid to lawn. Outside storage cupboard.

Parking

Allocated parking space







Ground Floor



First Floor

Total Area: 48.2 m² ... 519 ft²

All measurements are approximate and for display purposes only

Lovett Residential Sales & Lettings

24, Market Square, St Neots - PE19 2AF

01480 218200 • info@lovettsalesandlettings.co.uk • www.lovettsalesandlettings.co.uk

