



14 Anson Place, Eaton Socon, St. Neots, PE19 8NH

- SEMI-DETACHED FAMILY HOME
- THREE BEDROOMS
- GARAGE AND DRIVEWAY
- WALKING DISTANCE TO SCHOOLS / AMENITIES
- EASY ACCESS TO A1 & A428
- SUPERMARKETS AND RETAIL CLOSE BY

Full Description

A spacious three bedroom semi-detached family home in the popular Eaton Socon area. The property is within short walking distance to local schools, shops and amenities as well as easy access to the A1 and A428. The accommodation comprises entrance hall, open plan lounge/dining area and a kitchen on the ground floor. The first floor has three good sized bedrooms and a family bathroom. There are UPVC windows and doors throughout and gas radiator central heating. Externally there is a generous private rear garden and a driveway and garage to front. Viewing highly recommended! No forward chain.

ENTRANCE HALL

UPVC entrance door leading to entrance hall. Wood flooring. Radiator. Wooden glazed door leading to living room.

LOUNGE / DINING ROOM

20' 1 Max" x 17' 1 Max" (6.12m x 5.21m)

Stairs to first floor with cupboard under. TV and telephone point. Two radiators. Wood flooring. Door to kitchen. UPVC sliding doors to rear garden.

KITCHEN

10' 3" x 6' 8" (3.12m x 2.03m)

Fitted kitchen comprising work surfaces with drawers and cupboards under. Wall mounted cupboards. Single bowl sink with mixer tap and tiled splash backs. Gas cooker point. Plumbing for washing machine. Tiled floor. UPVC window to rear.

LANDING

Cupboard housing Vaillant gas combi boiler. Loft access. Doors to bedrooms and bathroom.

BEDROOM ONE

11' 3" x 10' 5" (3.43m x 3.18m)

UPVC window to rear. Built in wardrobes. Radiator.

BEDROOM TWO

10' 6" x 10' 5" (3.2m x 3.18m)

UPVC window to front. Radiator. Built in wardrobes.

BEDROOM THREE

7' 6" x 6' 6" (2.29m x 1.98m)

UPVC window to front. Radiator.



BATHROOM

Three piece suite comprising low level WC, pedestal wash hand basin and panelled bath with shower over. Tiled splash backs and glass screen. Radiator. UPVC window to rear.

REAR GARDEN

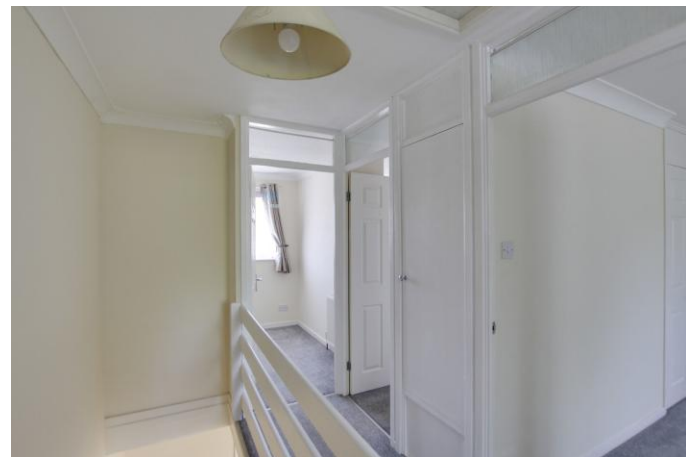
Private enclosed rear garden mainly laid to lawn with shrub borders. Patio area. Outside tap. Security light.

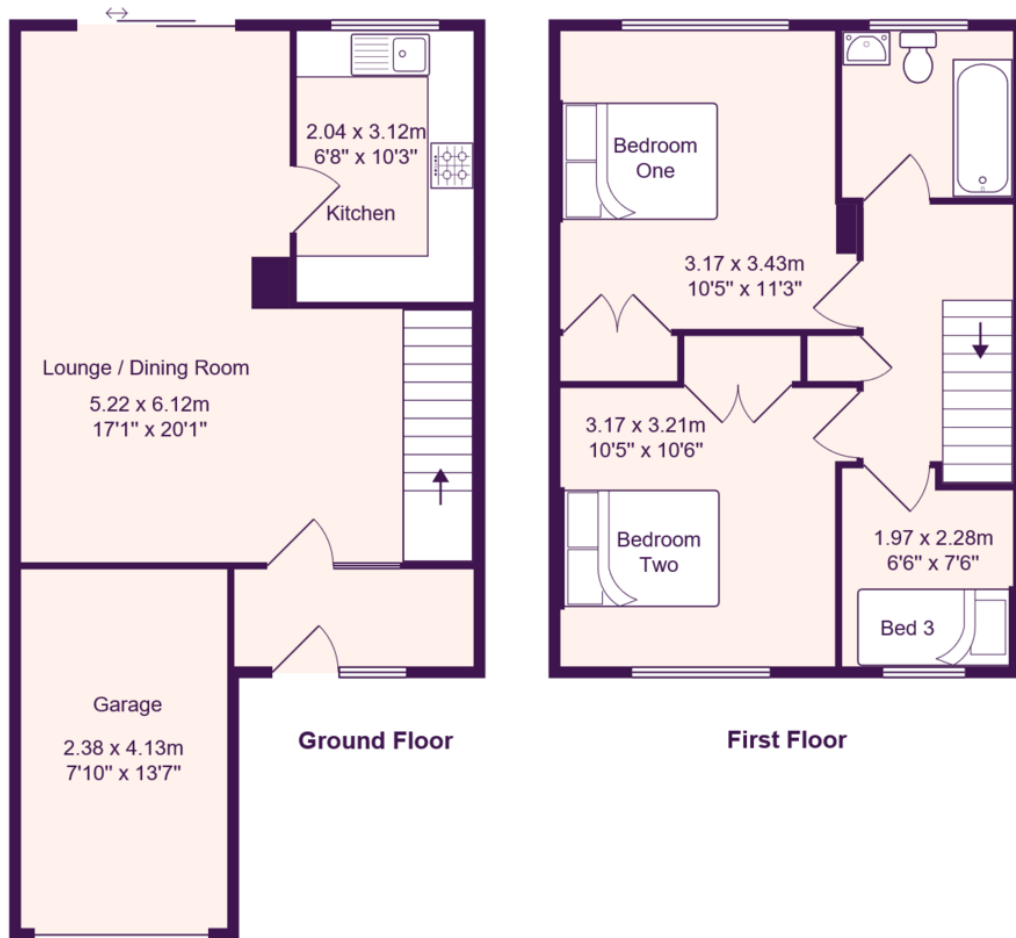
GARAGE

Single garage with metal up and over door. Power and light.

FRONT GARDEN

Mainly laid to gravel with driveway leading to garage.





Total Area: 83.5 m² ... 899 ft²

All measurements are approximate and for display purposes only

EPC GRAPH
%epcGraph_c_1_150%