



LOVETT
Sales & Lettings

£265,000



10 Roe Green, Eaton Socon, St. Neots, PE19 8QD

- END OF TERRACE FAMILY HOME
- THREE BEDROOMS
- GARAGE & PARKING TO REAR
- SOUTH / EAST FACING GARDEN
- REDECORATED THROUGHOUT
- CLOSE TO SCHOOLS & AMENITIES

Full Description

A recently redecorated three bedroom end of terrace family home in a quiet position located within walking distance to schools, shops and amenities. The spacious accommodation comprises entrance hall, wc, L-shaped living / dining room and a kitchen on the ground floor. On the first floor there are three bedrooms and a family bathroom. The property benefits from a feature open tread spiral staircase leading to the first floor. Externally there is a South East facing rear garden plus a garage and parking to the rear. Gas radiator heating. UPVC windows and doors. Viewing highly recommended. No forward chain!



ENTRANCE HALL

UPVC entrance door leading to entrance hall. Radiator. Door to living room and WC.

WC

Two piece white suite comprising low level WC and pedestal wash hand basin. Tiled splash backs. Radiator. UPVC window to side.



LIVING / DINING ROOM

23' 2" x 16' 1" (7.06m x 4.9m)

UPVC windows to front plus UPVC window and door to rear garden. Two radiators. TV and telephone point. Spiral staircase leading to first floor. Door to kitchen.

KITCHEN

10' 7" x 7' 9" (3.23m x 2.36m)

Fitted kitchen comprising work surfaces with complementary drawers and cupboards under. Wall mounted cupboards. Single bowl sink with mixer tap and tiled splash backs. Built in electric oven and four ring hob with extractor over. Plumbing for washing machine and dishwasher. wall mounted Ideal gas boiler. UPVC window to rear.



LANDING

Airing cupboard. Doors leading to bedrooms.

BEDROOM ONE

16' 1" x 8' 9" (4.9m x 2.67m)

UPVC windows to rear. Radiator. Cable point. Loft access.

BEDROOM TWO

9' 4" x 8' 4" (2.84m x 2.54m)

UPVC window to front. Radiator.



BEDROOM THREE

8' 0" x 6' 6" (2.44m x 1.98m)

UPVC window to front. Radiator.



BATHROOM

Three piece white suite comprising low level WC, pedestal wash hand basin and panelled bath with shower over. Tiled splash backs. Radiator. Extractor fan.



REAR GARDEN

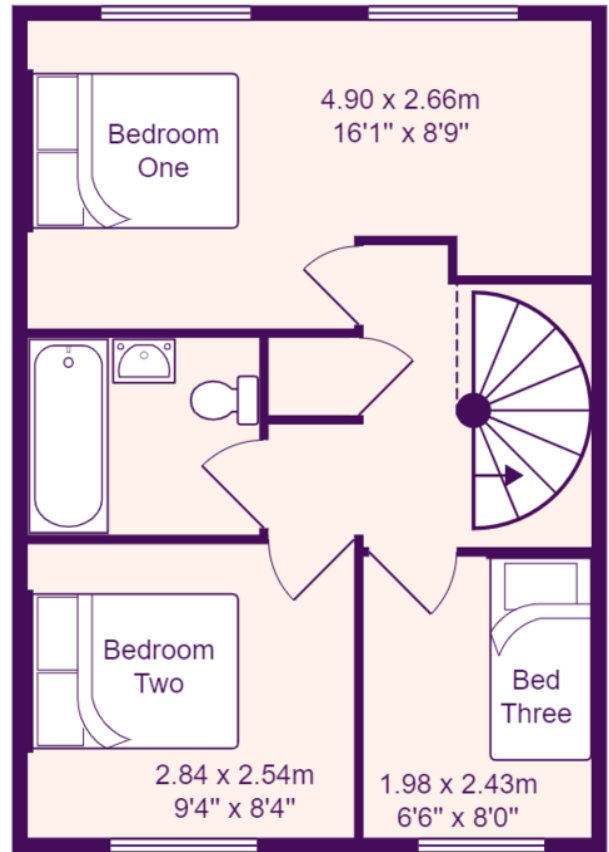
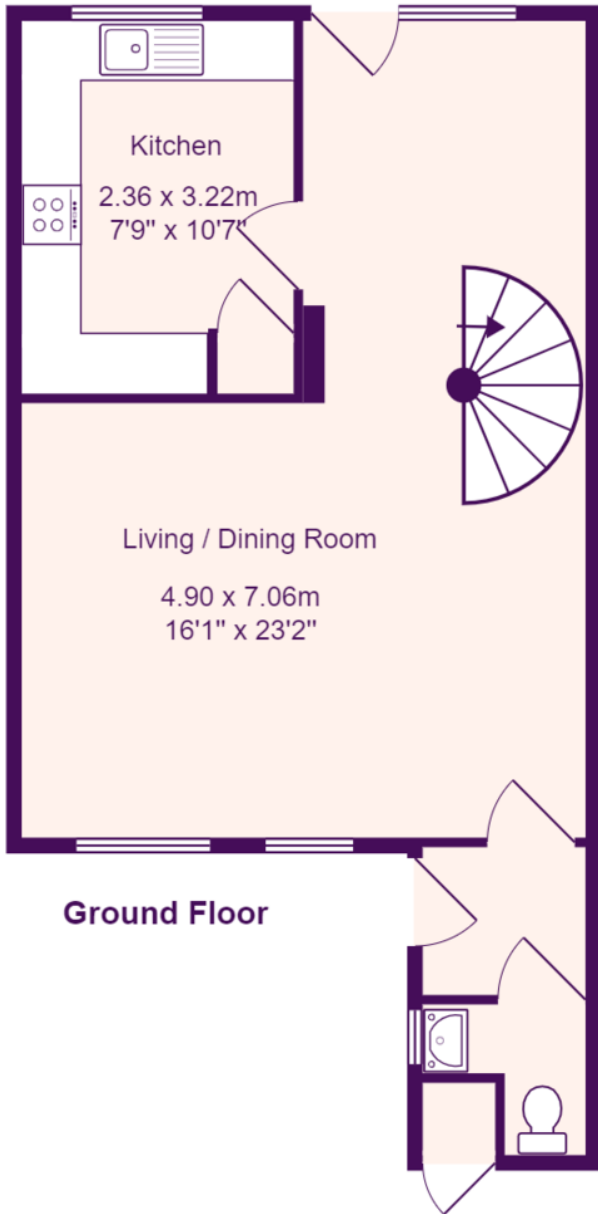
South East facing enclosed rear garden mainly laid to lawn with flower and shrub borders. Gated access to front and rear. Outside tap. Patio area.



GARAGE

Single garage to the rear of the property. Up and over door. Parking space in front.





Total Area: 73.1 m² ... 786 ft²

All measurements are approximate
and for display purposes only