



LOVETT
Sales & Lettings

Guide Price

£280,000



7 Fox Close, St. Neots, PE19 1SP

- SEMI-DETACHED HOUSE
- THREE BEDROOMS
- KITCHEN/DINER
- 0.5 MILE WALK TO TRAIN STATION
- 0.7 MILE WALK TO THE TOWN CENTRE
- GAS RADIATOR HEATING

Full Description

A spacious three bedroom semi-detached family home within short walking distance to St Neots train station, local schools, shops and amenities as well as easy access to the A1 and A428. The accommodation comprises entrance hall, living room and a kitchen/diner on the ground floor. The first floor has three good sized bedrooms and a family bathroom. There are UPVC windows and doors throughout and gas radiator central heating. Externally there is a comfortable mature rear garden and a landscaped garden to the front. Viewing highly recommended! No forward chain.

ENTRANCE HALL

UPVC entrance door leading to entrance hall. Radiator. Cupboard housing gas and electric metre. Wooden glazed door leading to kitchen/diner. Wooden glazed door leading to living room.

LIVING ROOM

13' 6" x 12' 5" (4.11m x 3.78m)

UPVC Double glazed window to front. Radiator. Television point. Telephone point. Gas fireplace. Wooden glazed door leading to kitchen/diner.

KITCHEN/DINER

17' 1" x 8' 5" (5.21m x 2.57m)

Fitted kitchen comprising work surfaces with drawers and cupboards under. Wall mounted cupboards. Stainless steel single bowl sink/drainers with mixer tap and tiled splash backs. Electric cooker point. Plumbing for washing machine. Plumbing for dishwasher. UPVC window to rear. UPVC double glazed French doors leading to patio area. Door to pantry. Door to side entrance and under stairs storage.

LANDING

UPVC double glazed window to side. Loft access

BEDROOM ONE

11' x 12' 5" (3.35m x 3.78m)

UPVC double glazed window to front. Radiator. Telephone point. Television point. Airing cupboard.

BEDROOM TWO

12' 5" x 8' 5" (3.78m x 2.57m)

UPVC double glazed window to rear. Radiator.

BEDROOM THREE

8' 9" x 7' 5" (2.67m x 2.26m)

UPVC double glazed window to front. Radiator.



BATHROOM

Three piece suite comprising low level WC, Vanity unit with wash hand basin and Corner shower cubical. Fully tiled walls. Heated towel rail. UPVC double glazed window to rear. Recessed down lights

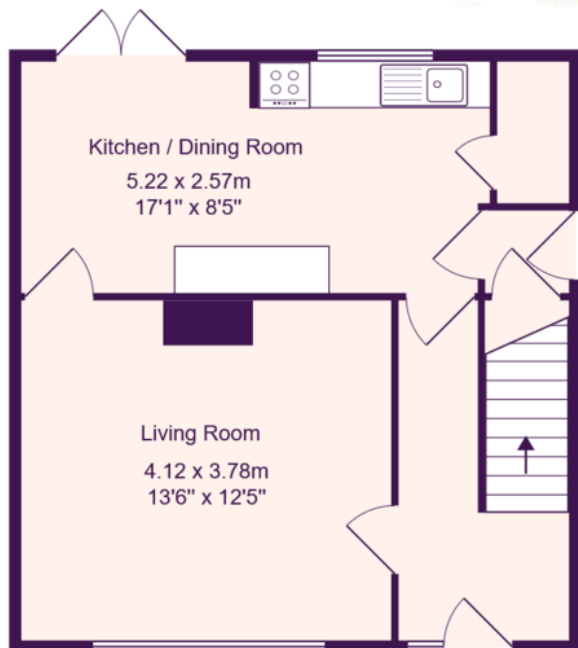
FRONT GARDEN

Low hedge enclosed garden with hard standing path leading to front door, flower beds, shrubbery and lawn area

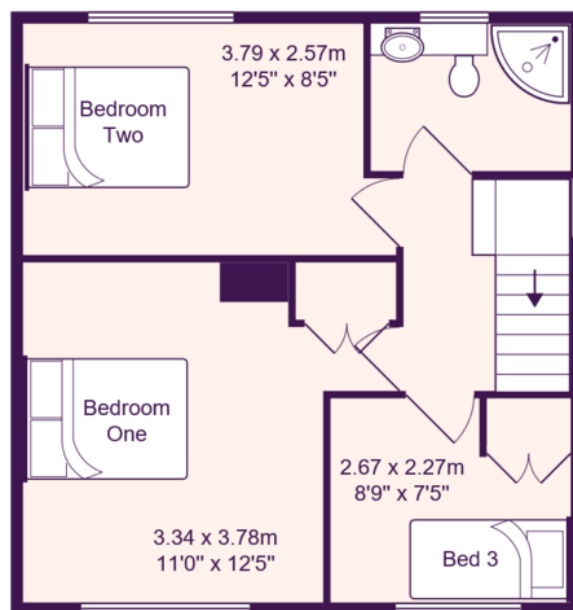
REAR GADREN

Fence enclosed garden. Patio area. Lawn. Flower beds. Mature trees. Brick garden shed. Pagoda. Glass green house.





Ground Floor



First Floor

Total Area: 78.4 m² ... 844 ft²

All measurements are approximate and for display purposes only

EPC GRAPH
%epcGraph_c_1_150%