



LOVETT
Sales & Lettings

Offers In Excess Of
£350,000



16 Ridgeway, Eynesbury, St. Neots, PE19 2QS

- SEMI-DETACHED BUNGALOW
- TWO DOUBLE BEDROOMS
- REFURBISHED THROUGHOUT
- REFITTED KITCHEN AND BATHROOM
- NEW WINDOWS AND DOORS
- ENCLOSED REAR GARDEN

Full Description

A fully refurbished two bedroom semi-detached bungalow in a sought after position close to local shops and amenities. The spacious accommodation comprises refitted kitchen / dining room, living room, two double bedrooms and a refitted shower room. The property benefits from newly installed UPVC windows and doors. Re-plastered and re-decorated throughout. Private enclosed rear garden. Block paved driveway leading to single garage. Viewing highly recommended! No forward chain.

REFITTED KITCHEN

17' 0" x 10' 9" (5.18m x 3.28m)

Refitted kitchen comprising work surfaces with complimentary drawers and cupboards under. Wall mounted cupboards. One and a half bowl sink with mixer tap. Built in electric oven and four ring hob with extractor fan over. Plumbing for washing machine and dishwasher. Radiator. UPVC windows to side and rear. Built in storage cupboard. Karndean flooring. Composite entrance door.

HALLWAY

Storage cupboard housing boiler controls. Karndean flooring. Loft access. Doors to living room, bedrooms and shower room.

LIVING ROOM

17' 5" x 11' 1" (5.31m x 3.38m)

UPVC windows and French doors to rear garden. Radiator. TV and telephone point.

BEDROOM ONE

13' 9" x 11' 1" (4.19m x 3.38m)

UPVC window to front. Radiator. Built in double wardrobes.

BEDROOM TWO

10' 9" x 8' 5" (3.28m x 2.57m)

UPVC windows to front. Radiator.

SHOWER ROOM

Refitted three piece white suite comprising low level WC, hand basin with vanity unit and fitted shower with glass surround and tiled splash backs. Heated towel rail. UPVC window to side.

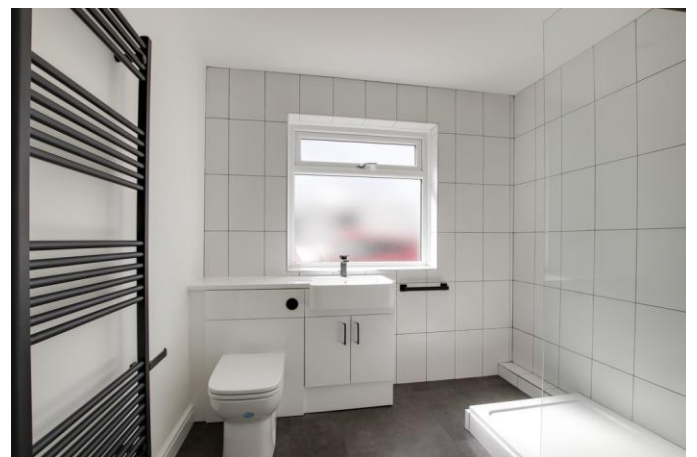
REAR GARDEN

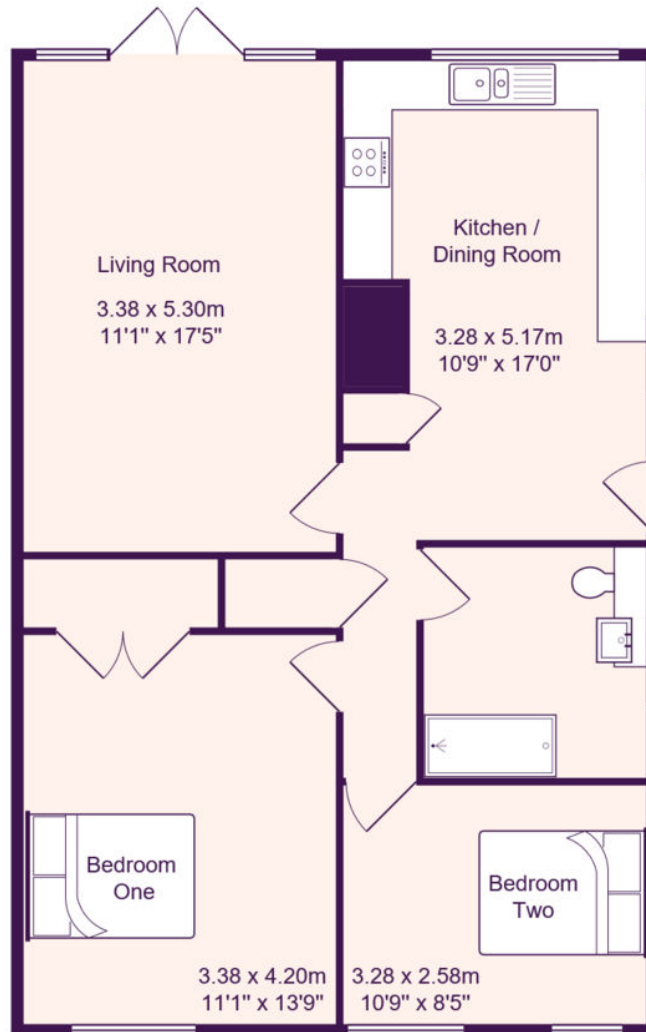
Enclosed rear garden mainly laid to lawn with flower and shrub borders. Outside tap.



GARAGE AND DRIVEWAY

Large blocked paved driveway providing off road parking for several vehicles. Single garage with metal up and over door. Window to side.





Total Area: 70.0 m² ... 754 ft²

All measurements are approximate and for display purposes only

EPC GRAPH
%epcGraph_c_1_150%