



LOVETT
Sales & Lettings

Offers In Excess Of
£350,000



66 Crowhill, Godmanchester, Huntingdon, PE29 2NR

- DETACHED FAMILY HOME
- FIVE BEDROOMS / TWO BATHROOMS
- CLOSE TO SCHOOLS & AMENITIES
- TWO MILES FROM TRAIN STATION
- OVER 1300 SQFT OF ACCOMMODATION
- NO FORWARD CHAIN

Full Description

With over 1300 SQFT of accommodation this is a spacious five bedroom detached family home in the heart of the popular residential area of Godmanchester. The property is situated less than half a mile from two primary schools and less than 2 miles from Hinchingsbrooke Secondary School. Godmanchester offers a range of shops, pubs, restaurants and independent stores. Huntingdon Railway Station is located 2 miles away. The accommodation comprises; entrance hall, WC, living room, dining room, conservatory, kitchen and two utility rooms on the ground floor. The first floor has five bedrooms with an ensuite to main bedroom and a family bathroom. Externally there is a private enclosed rear garden and a block paved driveway leading to garage/store. The property benefits from gas radiator heating and UPVC windows and doors. Viewing highly recommended. No forward chain.

LIVING ROOM

14' 8" x 13' 7" (4.47m x 4.14m)

DINING ROOM

10' 6" x 10' 4" (3.2m x 3.15m)

CONSERVATORY

12' 3" x 7' 5" (3.73m x 2.26m)

KITCHEN

10' 6" x 9' 6" (3.2m x 2.9m)

UTILITY ROOM

5' 11" x 7' 4" (1.8m x 2.24m)

SECOND UTILITY / STORE

12' 5" x 7' 4" (3.78m x 2.24m)

BEDROOM ONE

17' 11" x 7' 4" (5.46m x 2.24m)

BEDROOM TWO

13' 5" x 8' 7" (4.09m x 2.62m)

BEDROOM THREE

10' 8" x 8' 7" (3.25m x 2.62m)

BEDROOM FOUR

10' 2" x 6' 5" (3.1m x 1.96m)

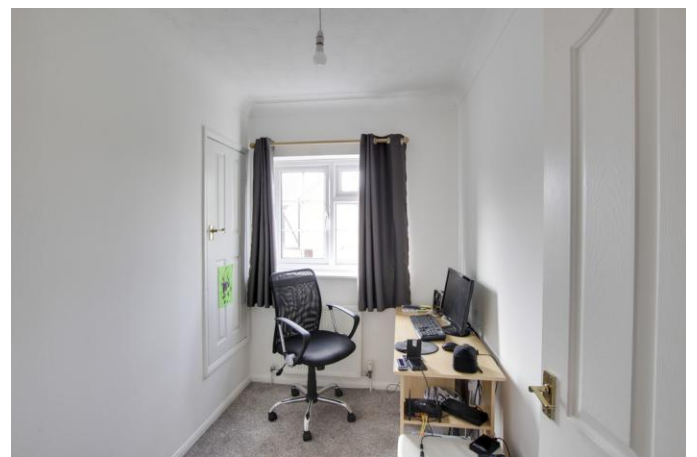


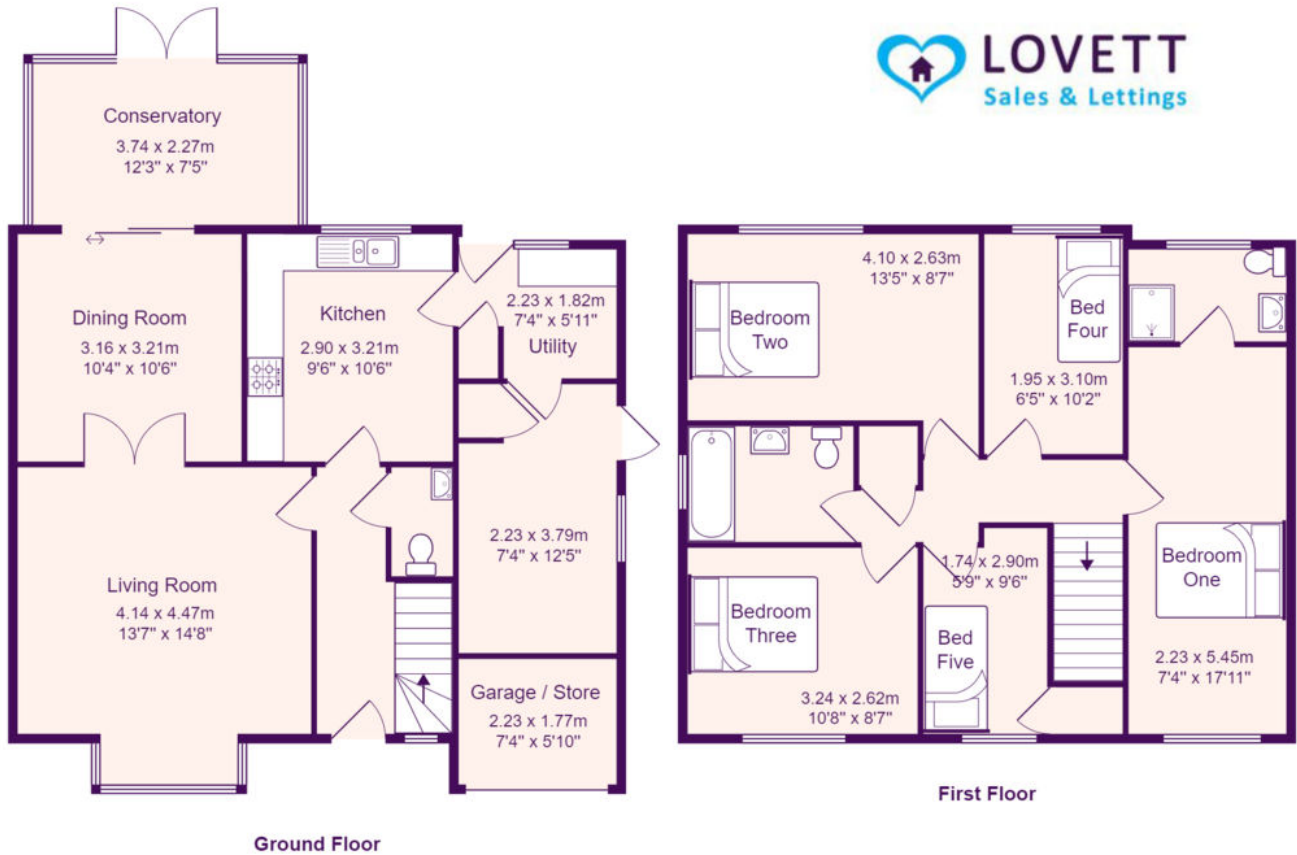
BEDROOM FIVE

9' 6" x 5' 9" (2.9m x 1.75m)

GARAGE / STORE

7' 4" x 5' 10" (2.24m x 1.78m)

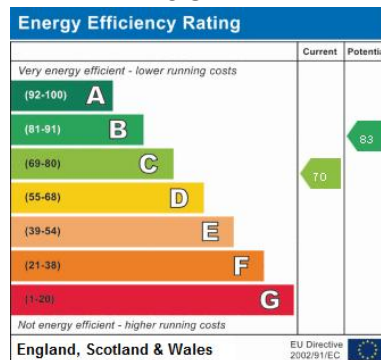




Total Area: 129.9 m² ... 1399 ft²

All measurements are approximate and for display purposes only

EPC GRAPH



www.lovettsalesandlettings.co.uk Tel: 01480 218200

24 Market Square, St Neots, Cambs, PE19 2AF

Agents Note: Whilst every care has been taken to prepare these sales particulars, they are for guidance purposes only. All measurements are approximate and for general guidance purposes only and whilst every care has been taken to ensure their accuracy, they should not be relied upon and potential buyers are advised to recheck the measurements