



15 Pattens Close, Whittlesey, Peterborough, PE7 1FA

- Semi-detached home
- Three bedrooms
- En-suite to main bedroom
- Primary & Secondary Schools nearby
- Whittlesey Train station 1.27 miles away
- South facing rear garden

Full Description

A well presented three bedroom semi-detached home in a cul-de-sac position in the heart of Whittlesey with both primary and secondary schools less than a mile away. Whittlesey Railway Station is just 1.27 miles away. The property, built in 2017, comprises; entrance hall, WC, kitchen and living/dining room on the ground floor. The first floor has Three bedrooms, en-suite to main bedroom plus a family bathroom. Externally, there is an enclosed South facing rear garden plus a garage a driveway to the front. The property benefits from Gas radiator heating and UPVC windows and doors throughout. Viewing highly recommended. No forward chain!

KITCHEN

10' 3" x 7' 3" (3.12m x 2.21m)

LIVING / DINING ROOM

15' 8" x 15' 6" (4.78m x 4.72m)

WC

BEDROOM ONE

11' 6" x 8' 6" (3.51m x 2.59m)

BEDROOM TWO

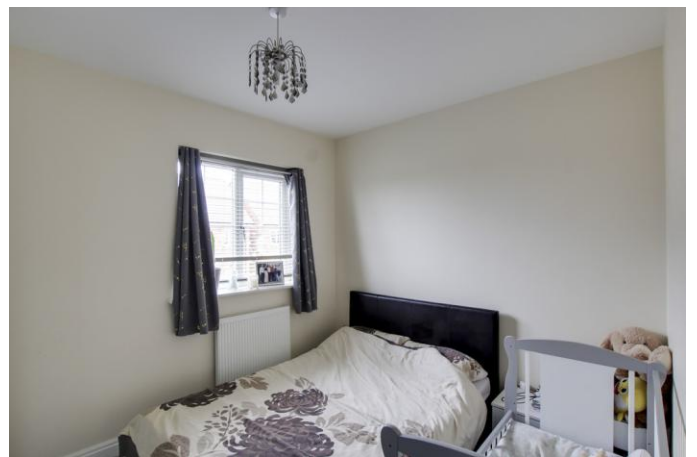
9' 8" x 8' 2" (2.95m x 2.49m)

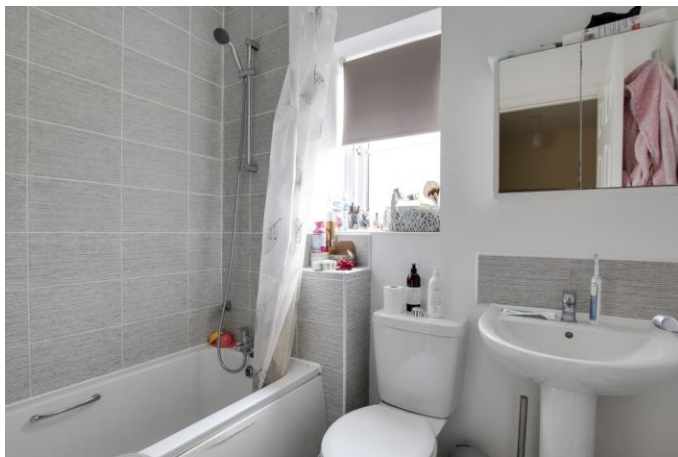
BEDROOM THREE

9' 8" x 7' 1" (2.95m x 2.16m)

BATHROOM

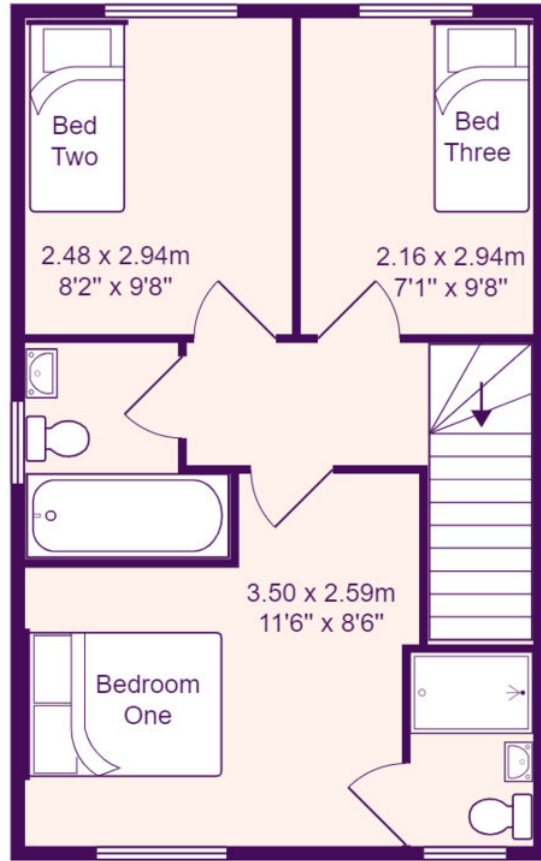
GARAGE







Ground Floor



First Floor

Total Area: 72.7 m² ... 782 ft²

All measurements are approximate and for display purposes only