



**LOVETT**  
Sales & Lettings

Offers In Excess Of  
**£400,000**



## **74 Great High Ground, St. Neots, PE19 6GP**

- DETACHED TOWN HOUSE
- FIVE DOUBLE BEDROOMS
- THREE BATHROOMS
- CLOSE TO RAILWAY STATION
- SCHOOLS, SHOPS AND PARKS NEARBY
- TWO PARKING SPACES TO REAR

## Full Description

With over 1500 SqFt of accommodation this is a spacious five double bedroom detached Town House within short walking distance to St Neots Train Station and local schools, shops and amenities. The accommodation over three floors comprises entrance hall, WC, kitchen/dining room and 22ft living room on the ground floor. The first floor has bedroom one with en-suite, bedrooms four, five and family bathroom. The second floor has two further double bedrooms and a shower room. Externally there is a East Facing rear garden with two parking spaces directly to the rear of the garden. The property benefits from UPVC windows and gas radiator central heating. Viewing highly recommended. No onward chain.

### LIVING ROOM

22' 5" x 10' 3" (6.83m x 3.12m)

### KITCHEN / DINING ROOM

22' 5" x 9' 4" (6.83m x 2.84m)

### UTILTIY ROOM

6' 7" x 6' 6" (2.01m x 1.98m)

### BEDROOM ONE

17' 5" x 10' 4" (5.31m x 3.15m)

### BEDROOM TWO

16' 10" x 9' 11" (5.13m x 3.02m)

### BEDROOM THREE

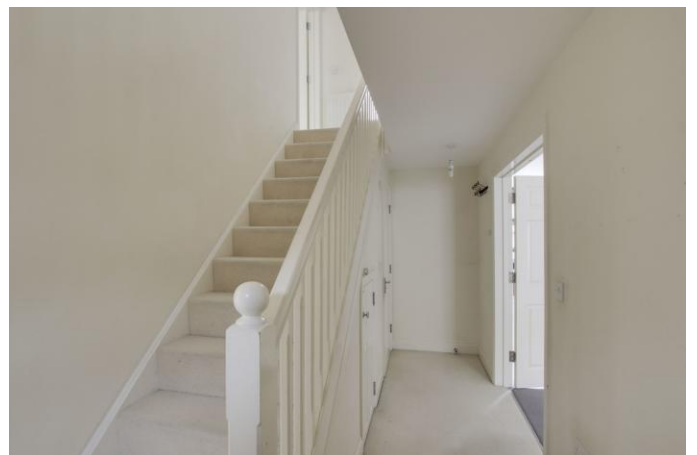
16' 10" x 9' 6" (5.13m x 2.9m)

### BEDROOM FOUR

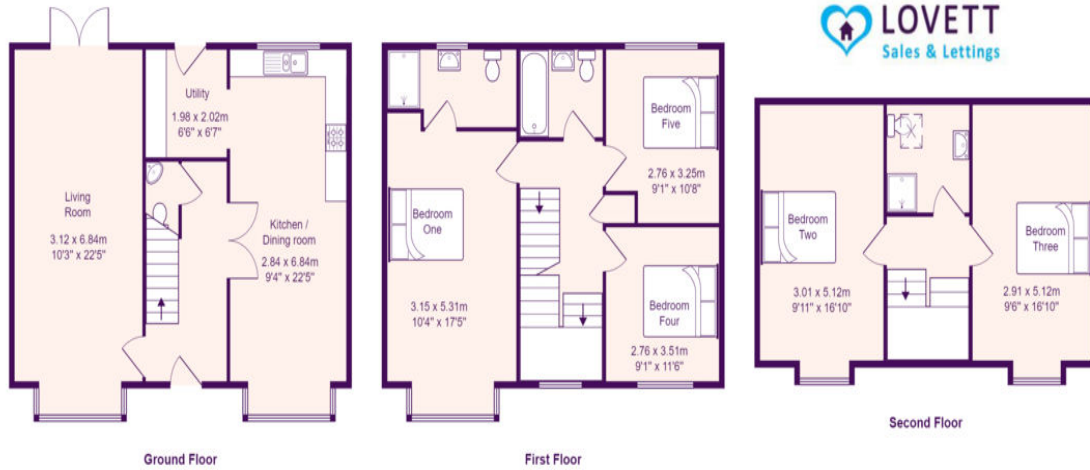
11' 6" x 9' 1" (3.51m x 2.77m)

### BEDROOM FIVE

10' 8" x 9' 1" (3.25m x 2.77m)







Total Area: 144.0 m<sup>2</sup> ... 1550 ft<sup>2</sup>  
All measurements are approximate and for display purposes only