



86 Muntjac Close, Eaton Socon, St. Neots, PE19 8QJ

- Two bedroom cluster home
- Popular area of Eaton Socon
- Gas radiator heating
- Open plan garden to front
- Allocated parking space
- In need of some cosmetic refurbishment

Full Description

A two bedroom cluster home in need of cosmetic refurbishment in a popular location in Eaton Socon. The accommodation comprises entrance hall, living room and kitchen on the ground floor. The first floor has two bedrooms and a bathroom. The property benefits from UPVC windows and gas radiator heating. Externally, there is an open plan front garden and an allocated parking space. Viewing highly recommended! No forward chain.

LIVING ROOM

12' 6" x 11' 7" (3.81m x 3.53m)

KITCHEN

11' 7" x 6' 5" (3.53m x 1.96m)

BEDROOM ONE

11' 7" x 8' 7" (3.53m x 2.62m)

BEDROOM TWO

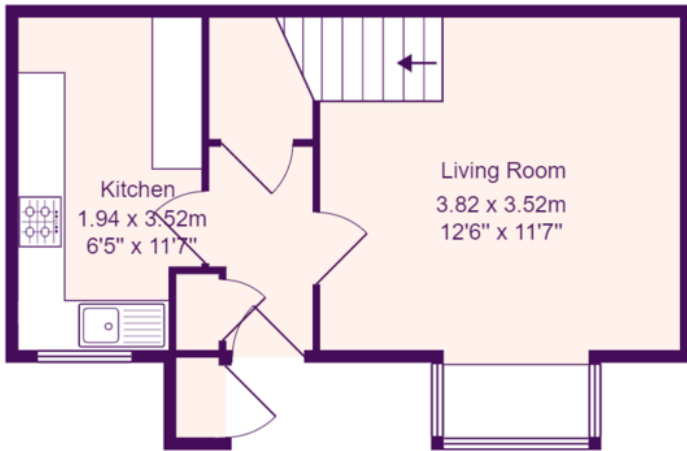
11' 7" x 6' 3" (3.53m x 1.91m)

PARKING

Allocated parking space







Ground Floor



First Floor

Total Area: 51.2 m² ... 552 ft²

All measurements are approximate and for display purposes only